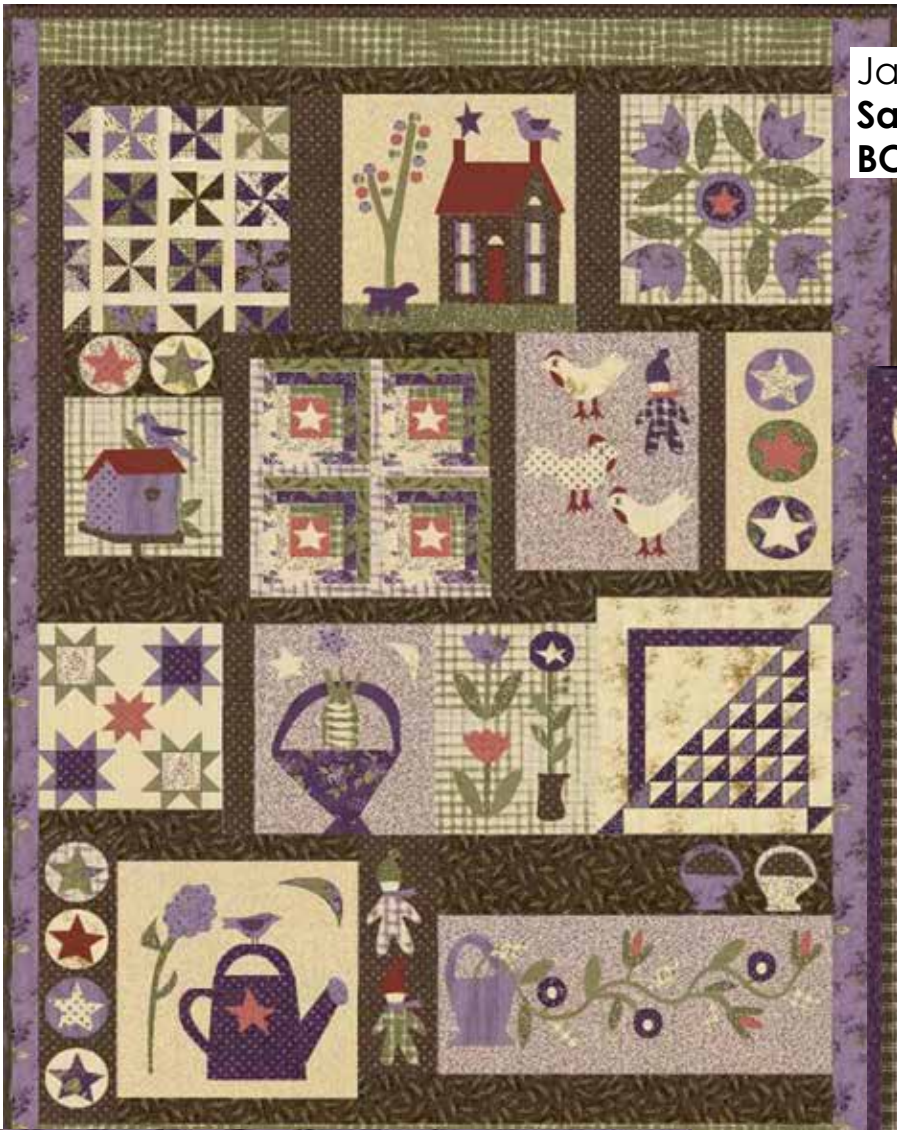
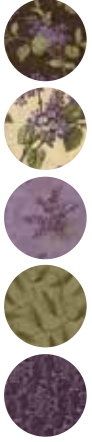


Jan Patek Quilts

Jan Patek Quilts - JPQ
Sample Spree 65" x 89"
 BOM/12 mos

Jan Patek Quilts - JPQ
Linda's Lilacs 42" x 38"

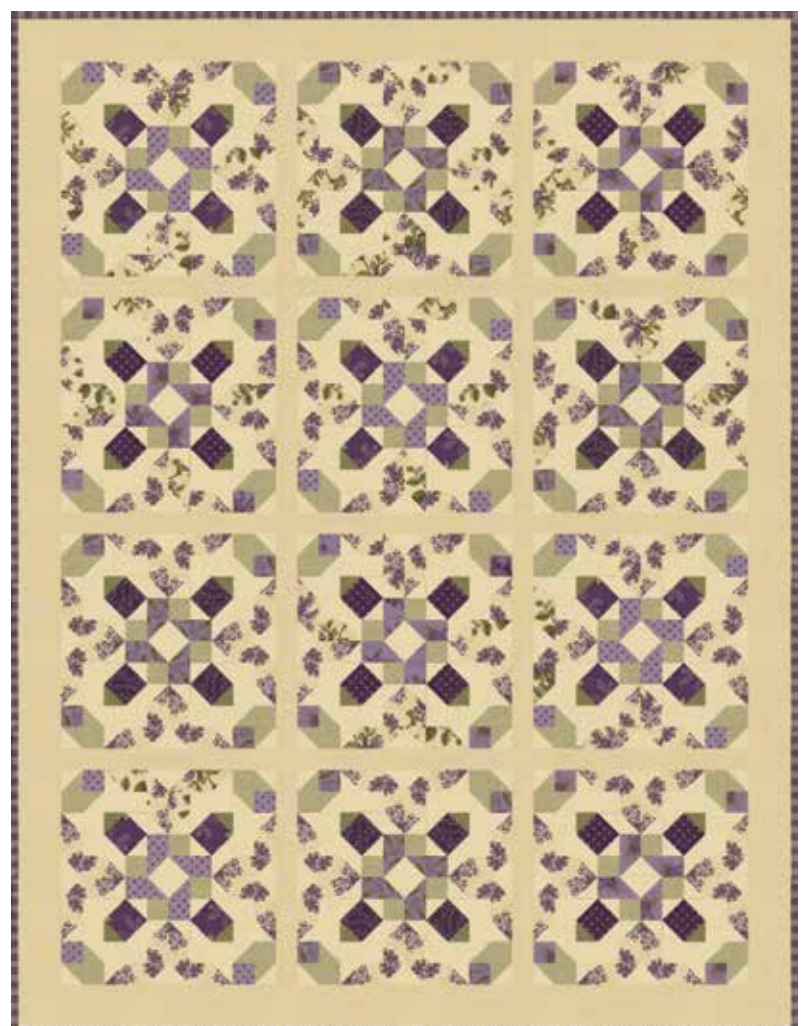


Jan Patek Quilts - JPQ
3 Birds On A Summer Day 22" x 44"

Jan Patek Quilts - JPQ
Star Gazing 41" x 56"



Jan Patek Quilts - JPQ
101 Lilac Place 28" x 32"



It's Sew Emma - ISE
Mayfield 54½" x 71"



Jan Patek Quilts - JPQ
Sample Spree 67" x 89"
BOM/12 mos

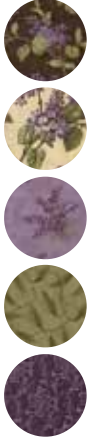
JPQ 2198

JPQ 2198G

* denotes these fabrics are in the Low Cal Assortment

			<u>1 Q</u>	<u>10 Qs</u>				<u>1 Q</u>	<u>10 Qs</u>
	2210PP	Blocks	1	10		2214-16	Bkgrnd/App	2/3	6 2/3
	9900-150	Applique	1/2	5		2215-11	Applique	1/3	3 1/3
	13526-22	Applique	1/3	3 1/3		2215-13*	Bkgrnd/ App, Border	1 1/3	13 1/3
	2210-13*	Applique	1/4	2 1/2		2215-16	Applique	1/8	1 1/4
	2210-14*	Brdrs/App	1 1/4	12 1/2		2215-21	Bkgrnd/App	1	10
	2210-21*	Bkgrnd/App	3/4	7 1/2		2216-11*	Applique	1/4	2 1/2
	2211-11*	Applique	1/4	2 1/2		2216-14*	Applique	1/8	1 1/4
	2211-16*	Applique	1/3	3 1/3		2216-15	Bkgrnd/App Sash/Bind	1 5/8	16 1/4
	2212-11	Bkgrnd/App	1/2	5		2216-16*	Applique	1	10
	2212-13*	Applique & star points	1/2	5		2218-11*	Background	1/2	5
	2212-14	Applique & star points	1/2	5		2218-13	Applique	1/8	1 1/4
	2212-16	Applique	1/4	2 1/2		2218-14*	Bkgrnd/App	1/2	5
	2213-13	Applique	1/4	2 1/2		2218-15*	Applique	F8	1 1/4
	2213-15*	Bkgrnd/Sash	3/4	7 1/2		2218-16*	Applique	F8	1 1/4
	2214-11*	Applique	1/3	3 1/3		2218-21	Bkgrnd/App	1	10
	2214-13	Applique	5/8	6 1/4					

Yardages provided at the time of this printing may change. Please consult the printed pattern before cutting kits.



Jan Patek Quilts - JPQ
Linda's Lilacs 42" x 38"

JPQ 2199 

JPQ 2199G 

* denotes these fabrics are in the Low Cal Assortment

Yardages provided at the time of this printing may change. Please consult the printed pattern before cutting kits.

 2

 9

 7

 4

 1

 8

 1

 5

 6

 7

 4

 0

 4

 8

 5

 2

 9

 3

 2

			<u>1 Q</u>	<u>10 Qs</u>
9900-150	Applique		1/4	2 1/2
2210-14*	Brdrs/App		1/4	2 1/2
2211-15*	Borders		1/4	2 1/2
2211-16*	Applique		1/8	1 1/4
2212-11	Bkground & Applique		1/2	5
2212-13*	Tris/App		1/2	5
2212-16	Applique		1/4	2 1/2
2213-13	Applique	F8		1 1/4
2214-11*	Triangles		1/2	5
2215-11	Applique	F8		1 1/4
2215-13*	Applique		1/8	1 1/4
2215-15	Borders		1/3	3 1/3
2215-21	Stop Brdr		1/8	1 1/4
2216-14*	Applique	F8		1 1/4
2216-15	App/Bkgrnd		1/3	3 1/3
2216-16*	Background		1/8	2 1/2
2218-11*	Applique		1/8	1 1/4
2218-14*	Applique		1/4	2 1/2
2216-16*	Binding		1/2	5



* denotes these fabrics are in the Low Cal Assortment

			1 Q	10 Qs
	13526-22	Applique	1/8	1 1/4
	9900-150	Applique	1/8	1 1/4
	2210-13*	Applique	FQ	2 1/2
	2210-14*	Brdr/App	1/4	2 1/2
	2211-15*	Applique	1/8	1 1/4
	2211-16*	Applique	1/8	1 1/4
	2212-11	Bkgrnd/App	3/4	7 1/2
	2212-13*	Applique	F8	1 1/4
	2213-13	Applique	1/8	1 1/4
	2214-13	Applique	1/4	2 1/2
	2215-11	Applique	1/8	1 1/4
	2215-21	Borders	1/4	2 1/2
	2216-11*	Applique	1/8	1 1/4
	2216-14*	Applique	1/8	1 1/4
	2216-15	Applique	FQ	2 1/2
	2218-13	Applique	1/8	1 1/4
	2218-14*	Applique	FQ	2 1/2
	2218-15*	Applique	F8	1 1/4
	2218-22	Applique	F8	1 1/4
	2212-16	Bind/App	1/3	3 1/3



Jan Patek Quilts - JPQ
101 Lilac Place 28" x 32"

JPQ 2200

JPQ 2200G

Jan Patek Quilts - JPQ
3 Birds On A Summer Day 22" x 44"

JPQ 2197

JPQ 2197G



1 Q **10 Qs**

	2210MC	Blocks	1	10
	13256-22	Sashing	1/4	2 1/2
	2210-13*	Brdr/App	FQ	2 1/2
	2210-14*	Border	1/4	2 1/2
	2211-16*	Applique	FQ	2 1/2
	2212-13*	Applique	FQ	2 1/2
	2212-16	Applique	1/8	1 1/4

* denotes these fabrics are in the Low Cal Assortment

			1 Q	10 Qs
	2213-13	Applique	F8	1 1/4
	2214-11*	Background	1/2	5
	2214-13	Border	1/4	2 1/2
	2215-11	Applique	1/8	1 1/4
	2215-13*	App/Brdrs	FQ	2 1/2
	2216-14*	Applique	F8	1 1/4
	2216-16*	Applique	FQ	2 1/2
	2218-14*	Applique	1/8	1 1/4
	2218-16*	Binding	1/3	3 1/3

Yardages provided at the time of this printing may change. Please consult the printed pattern before cutting kits.



Jan Patek Quilts - JPQ
Star Gazing 41" x 56"

JPQ 2196 

JPQ 2196G 

* denotes these fabrics are in the Low Cal Assortment

 5

 1

 1

 8

 5


 4

 9

 3

 6

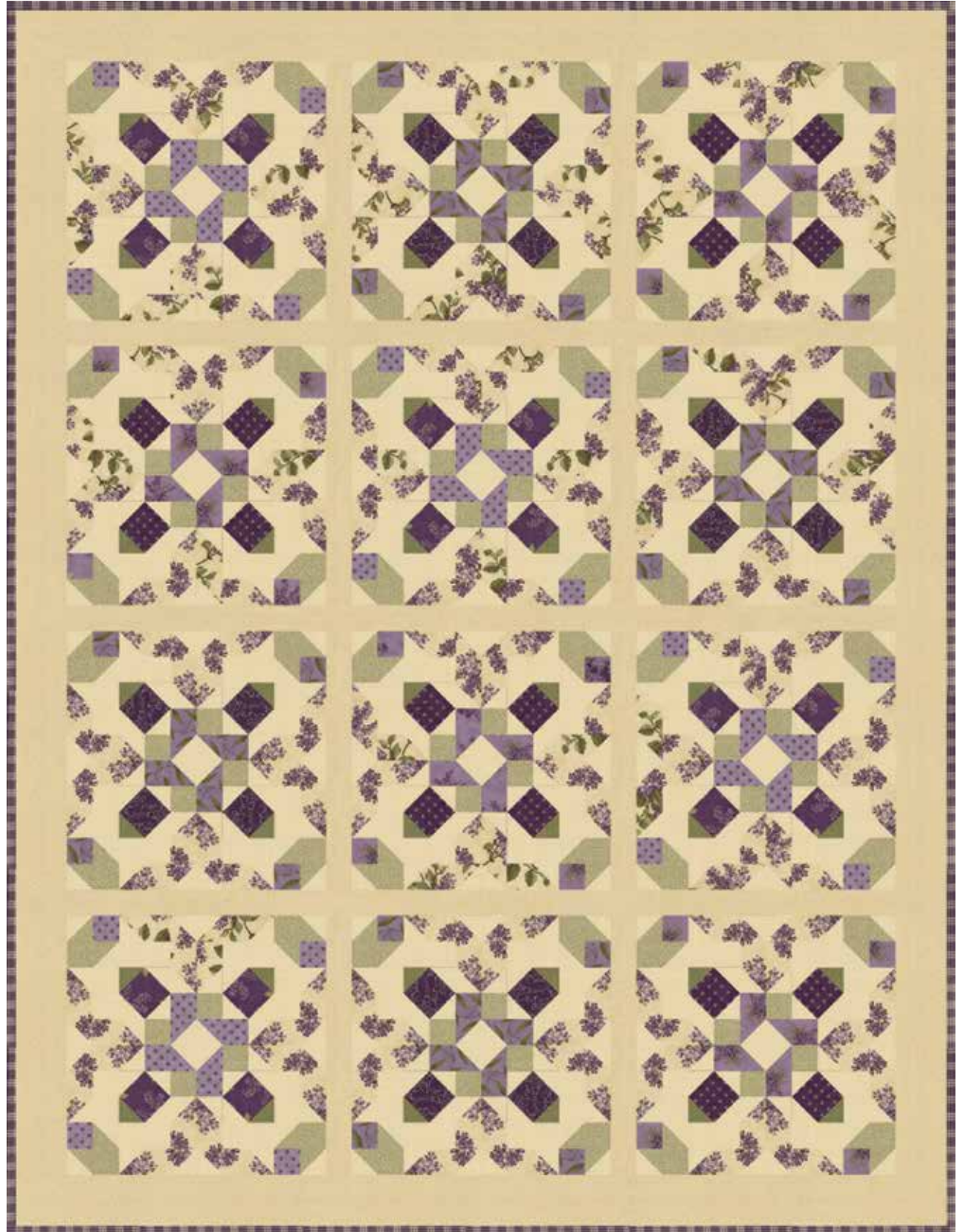
 3

 0

 8

			<u>1 Q</u>	<u>10 Qs</u>
2210LC	blocks		1	10
13526-22	Applique		FQ	2½
2212-11	Applique		F8	1¼
2212-13*	Applique		F8	1¼
2213-13	Applique		FQ	2½
2215-21	Applique		F8	1¼
2218-11*	Applique		F8	1¼
2218-14*	Applique		¼	2½
2218-16*	Borders & Applique		1	10
2218-21	Background & Applique		1¼	12½
2218-22	Applique		FQ	2½
2216-14*	Background, Sash & Bind		1	10

Yardages provided at the time of this printing may change. Please consult the printed pattern before cutting kits.



It's Sew Emma - ISE
Mayfield 54½" x 71"

ISE 190 

ISE 190G 

* denotes these fabrics are in the Low Cal Assortment

 7 52106 38261 9

2210-14*

Blocks

1 Q

FQ

10 Qs

2½

 7 52106 38264 0

2211-11*

Blocks

1⅓

13⅓

 7 52106 38266 4

2211-16*

Blocks

FQ

2½

 7 52106 38267 1

2212-11

Background

2¾

23¾

 7 52106 38273 2

2213-14

Blocks

FQ

2½

 7 52106 38277 0

2214-16

Blocks

FQ

2½

 7 52106 38284 8

2216-14*

Blocks

FQ

2½

 7 52106 38286 2

2216-16*

Blocks

FQ

2½

 7 52106 38288 6

2218-13

Blocks

FQ

2½

 7 52106 38292 3

2218-21

Sashing & Borders

1⅓

13⅓

 7 52106 38293 0

2218-22

Blocks

¾

7½

 7 52106 38281 7

2215-16

Binding

¾

7½

 7 52106 38275 6

2214-11*

Backing

3⅝

36¼

Yardages provided at the time of this printing may change. Please consult the printed pattern before cutting kits.