

cut!sew create[®]

with Stacy Test Hsu for *moda*

Cut Sew Create is back with some familiar projects in new colorways and some fun new projects. These kits are perfect for teaching new sewists new skills to put in their sewing toolbox. From easy projects like pillowcases to more challenging projects like backpacks and zipper pouches, the Cut Sew Create program has a full assortment of 14 projects for new sewists. Create future makers, confidence, and most importantly, memories with these wonderful kits. Let's get sewing!



20930 11P

All panel projects will come packaged in polybags with headers



moda NOVEMBER DELIVERY



Smile Backpack

Makes 1 backpack and 20 patches.
Skill Level: Intermediate



PROJECT: SOFT-SERVE PURSE LEVEL: **III** INTERMEDIATE

YOU WILL NEED THE FOLLOWING SUPPLIES:
 1/2" zipper
 Light-weight 100% cotton interfacing

SKILLS YOU WILL LEARN: SEWING A ZIPPER

NOTE:
 *All measurements are in inches unless otherwise noted.
 **When you cut out a piece, cut along the outer edge and not the inner edge.
 ***For the zipper, you should use a zipper that is the same length as the zipper hole in the pattern.
 ****When you cut out a piece, you should cut along the outer edge and not the inner edge.
 *****When you cut out a piece, you should cut along the outer edge and not the inner edge.

INSTRUCTIONS:
 1. Cut out the pieces.
 2. Press the zipper pouch piece.
 3. Sew the zipper pouch piece to the main body piece.
 4. Sew the strap to the main body piece.
 5. Turn the purse right side out.
 6. Push the zipper hole to the center of the main body piece.
 7. Push the zipper hole to the center of the main body piece.
 8. Push the zipper hole to the center of the main body piece.
 9. Push the zipper hole to the center of the main body piece.
 10. Push the zipper hole to the center of the main body piece.
 11. Push the zipper hole to the center of the main body piece.
 12. Push the zipper hole to the center of the main body piece.
 13. Push the zipper hole to the center of the main body piece.
 14. Push the zipper hole to the center of the main body piece.
 15. Push the zipper hole to the center of the main body piece.
 16. Push the zipper hole to the center of the main body piece.
 17. Push the zipper hole to the center of the main body piece.
 18. Push the zipper hole to the center of the main body piece.
 19. Push the zipper hole to the center of the main body piece.
 20. Push the zipper hole to the center of the main body piece.

cut!sew *create*® with Stacy Iest Hsu for *moda*

20933 11P

PROJECT: HAMBURGER TOTE WITH ZIPPER POUCH LEVEL: **III** INTERMEDIATE

YOU WILL NEED THE FOLLOWING SUPPLIES:
 1/2" zipper
 Light-weight 100% cotton interfacing

SKILLS YOU WILL LEARN: SEWING A ZIPPER

NOTE:
 *All measurements are in inches unless otherwise noted.
 **When you cut out a piece, cut along the outer edge and not the inner edge.
 ***For the zipper, you should use a zipper that is the same length as the zipper hole in the pattern.
 ****When you cut out a piece, you should cut along the outer edge and not the inner edge.
 *****When you cut out a piece, you should cut along the outer edge and not the inner edge.

INSTRUCTIONS:
 1. Cut out the pieces.
 2. Press the zipper pouch piece.
 3. Sew the zipper pouch piece to the main body piece.
 4. Sew the strap to the main body piece.
 5. Turn the tote right side out.
 6. Push the zipper hole to the center of the main body piece.
 7. Push the zipper hole to the center of the main body piece.
 8. Push the zipper hole to the center of the main body piece.
 9. Push the zipper hole to the center of the main body piece.
 10. Push the zipper hole to the center of the main body piece.
 11. Push the zipper hole to the center of the main body piece.
 12. Push the zipper hole to the center of the main body piece.
 13. Push the zipper hole to the center of the main body piece.
 14. Push the zipper hole to the center of the main body piece.
 15. Push the zipper hole to the center of the main body piece.
 16. Push the zipper hole to the center of the main body piece.
 17. Push the zipper hole to the center of the main body piece.
 18. Push the zipper hole to the center of the main body piece.
 19. Push the zipper hole to the center of the main body piece.
 20. Push the zipper hole to the center of the main body piece.

cut!sew *create*® with Stacy Iest Hsu for *moda*

20931 11P

Hamburger Tote with Zipper Pouch

Makes 1 reversible tote and 1 zipper pouch.
 Skill Level: Intermediate



Reverse



Soft Serve Purse

Makes 1 bag.
 Skill Level: Intermediate





20932 11P

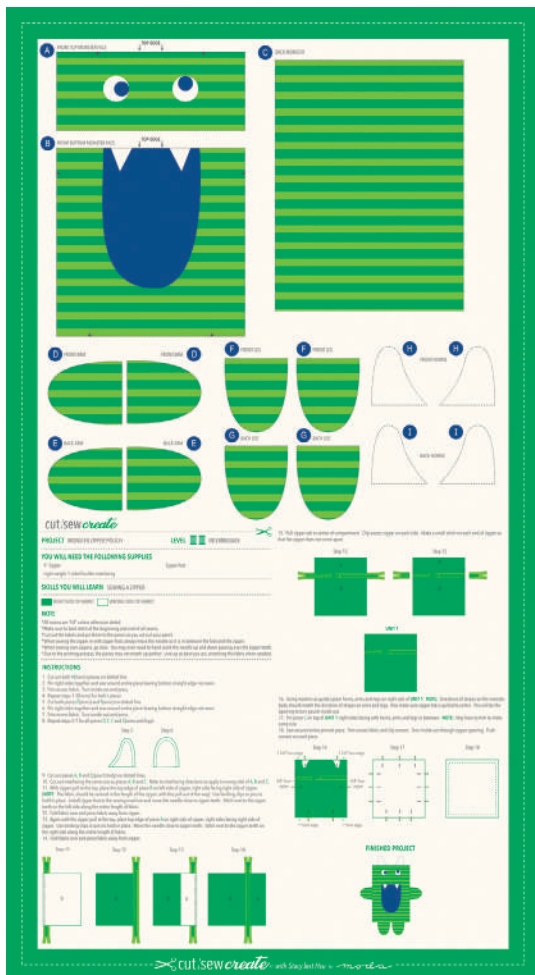
Be Happy Tote

Makes 1 reversible tote.
Skill Level: Intermediate



Front

Back



20937 11P

Monster Zipper Pouch

Makes 1 zipper pouch.
Skill Level: Intermediate





20936 11P

**Sunshine, Rainbow, and
Cloud Plushies**

Makes 3, two-sided pillows.
Skill Level: Beginner



Front



Back



Front



Back



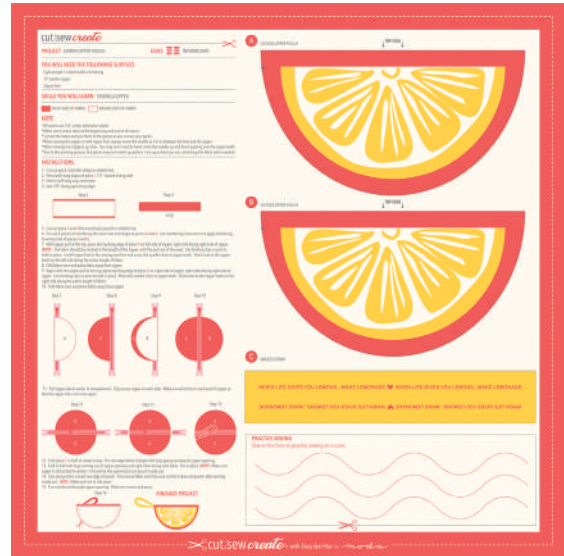
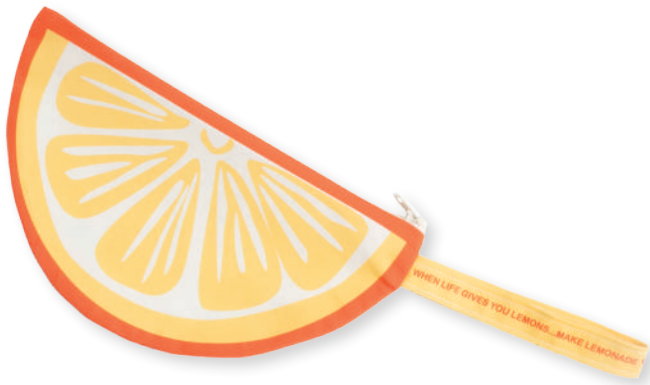
20934 11P

Animal Plushies

Makes 3, two-sided pillows.
Skill Level: Beginner

Lemon Zipper Pouch

Makes 1 zipper pouch.
Skill Level: Intermediate



20938 11P



20939 11P

Let's Be Happy Zipper Pouch

Makes 1 zipper pouch.
Skill Level: Intermediate



Front

Back

Pillow Case

Makes 1 pillowcase.
Skill Level: Beginner



20935 11P



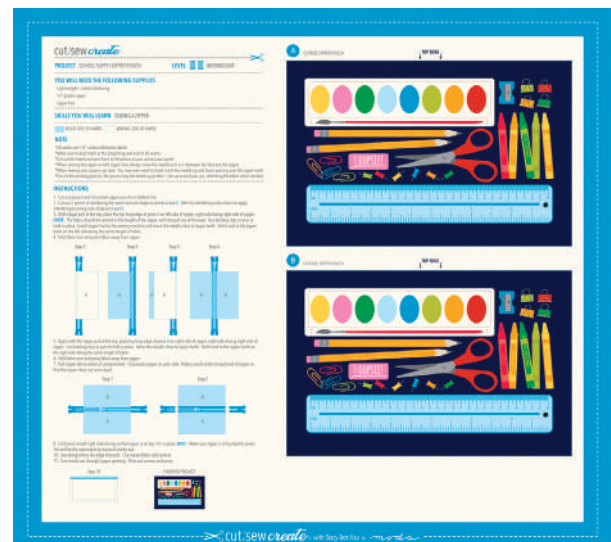
Front

Back

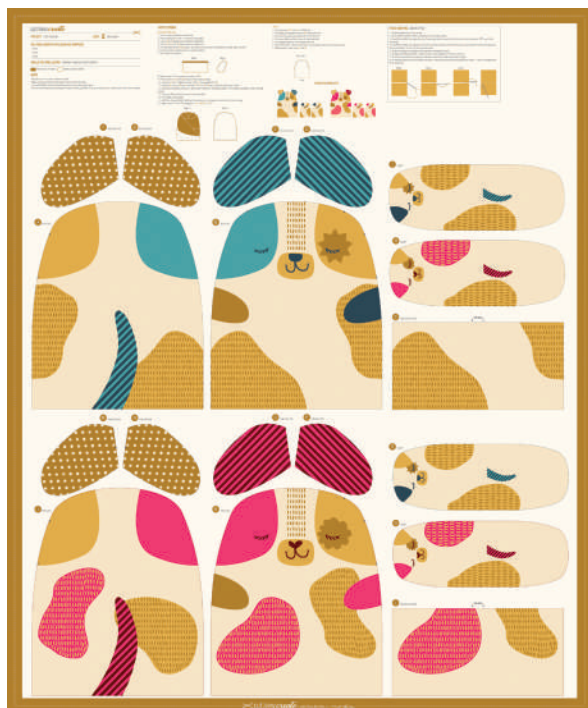


School Supply Zipper Pouch

Makes 1 zipper pouch.
Skill Level: Intermediate



20940 11P



20941 11P

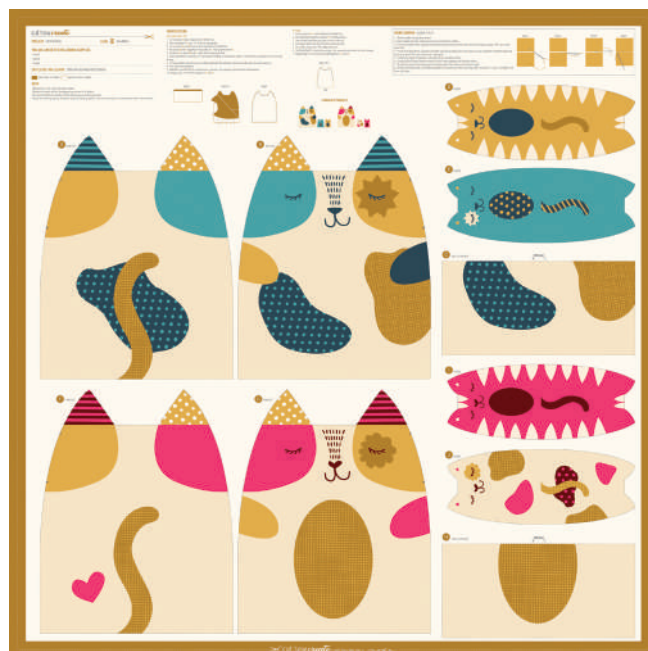
Dog Plushies

Makes 2 large dog plushies and 2 small dog plushies.
Skill Level: Beginner



Cat Plushies

Makes 2 large cat plushies and 2 small cat plushies.
Skill Level: Beginner



20942 11P



20943 11P

Best Friends Forever Dolls

Makes 4 dolls, 4 purses and 4 small animals.
Skill Level: Intermediate

