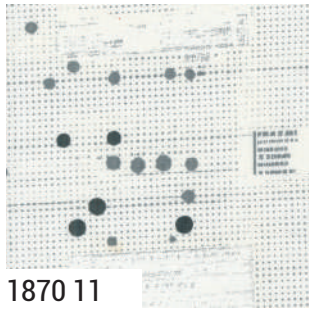


# STILL MORE PAPER ZEN CHIC



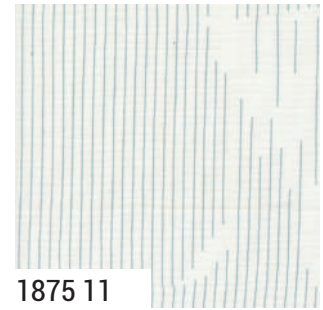
1870 11



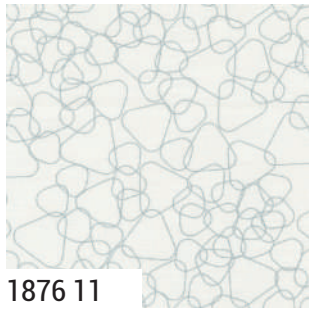
1872 11



1873 11



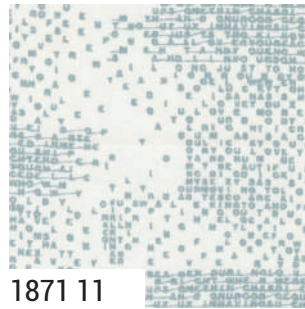
1875 11



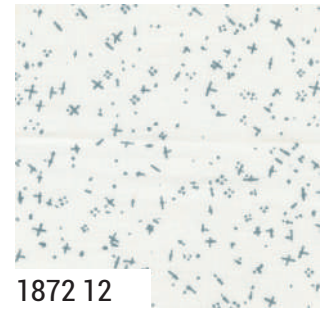
1876 11



1874 12



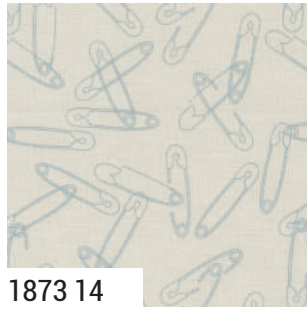
1871 11



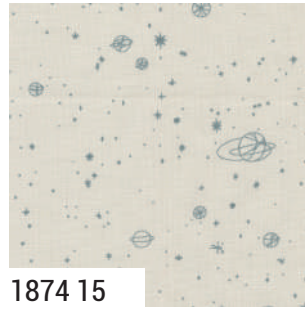
1872 12



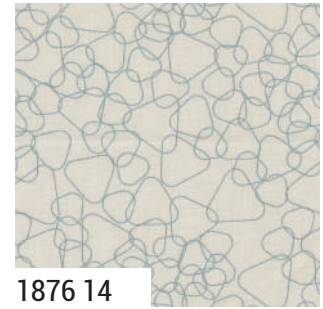
1871 13



1873 14



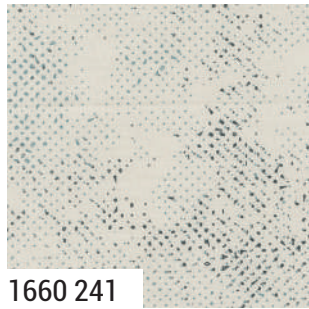
1874 15



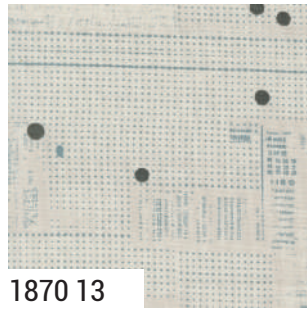
1876 14



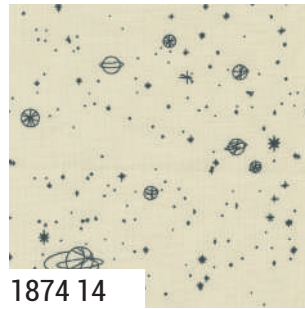
1875 13



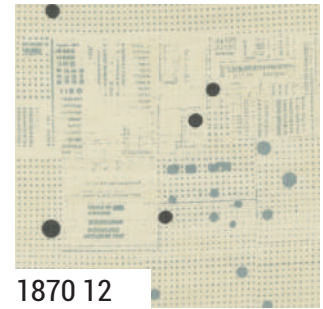
1660 241



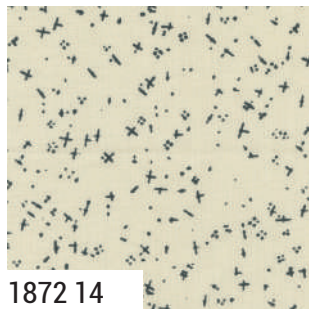
1870 13



1874 14



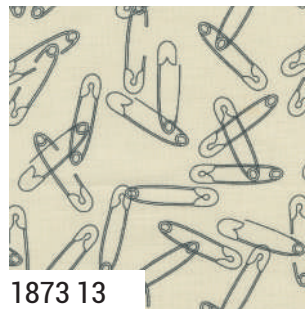
1870 12



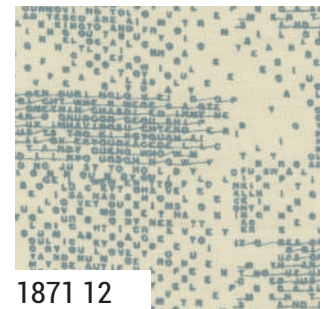
1872 14



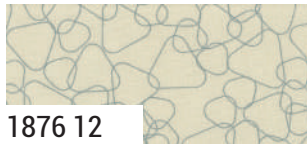
1875 12



1873 13



1871 12



1876 12

1870

Asst.  
15

Asst.  
10

AB

JR

LC

MC

PP

NOVEMBER DELIVERY

•22 Prints •100% Premium Cotton

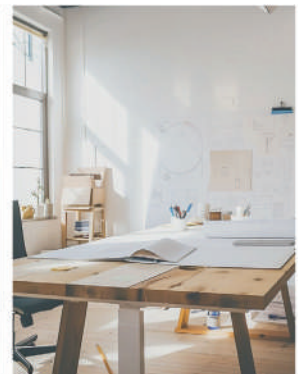
ABs include all 22 skus. JRs, LCs, MCs & PPs include 22 skus with two each of 1870, 1871 & 1873 - 1876.



# STILL MORE PAPER

## ZEN CHIC

**E**xplore **STILL MORE PAPER**, the newest marvel in Zen Chic's Low Volume series. Following **PAPER**, **MORE PAPER**, and **EVEN MORE PAPER**, this collection continues the legacy with timeless, versatile textures. Embracing whites, eggshells, and linens across ten unique patterns, it's an essential for every quilter. **STILL MORE PAPER** perfectly blends with various fabrics, adding a touch of understated elegance and modern sophistication to your quilting projects. A true must-have, it's where charm meets timeless design.



Poppet Pouch pattern by Rosie Taylor Craft can be found on [etsy.com](https://www.etsy.com).

**NOVEMBER DELIVERY**

*moda*



*projects*

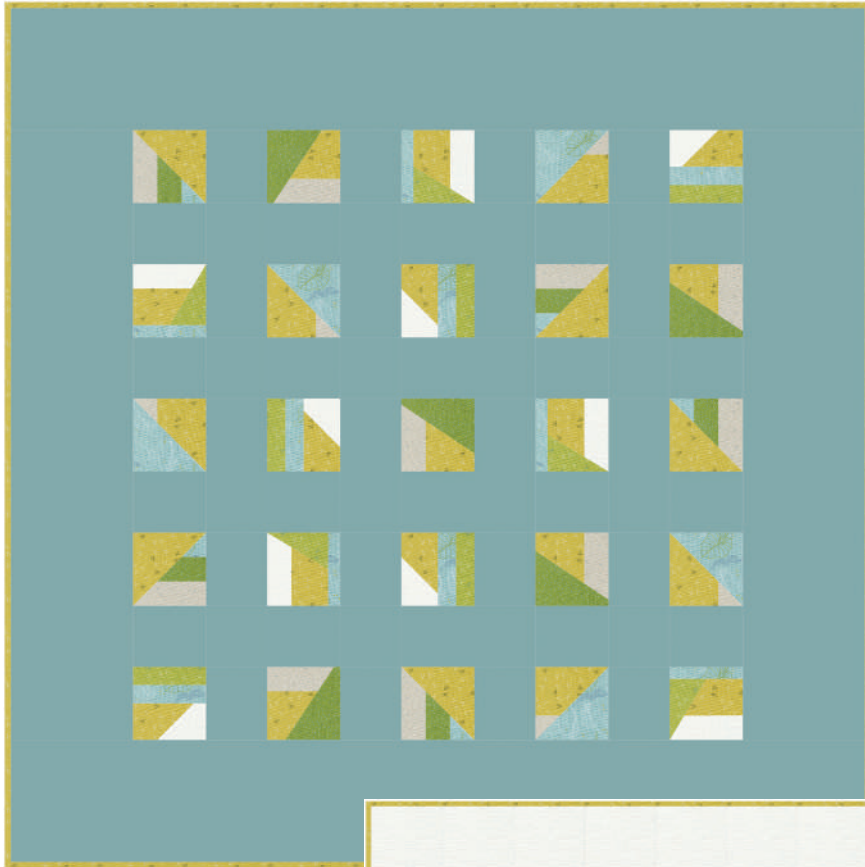


**ZC CMQP Cosmo**  
65" x 69" F8 Friendly  
by Zen Chic

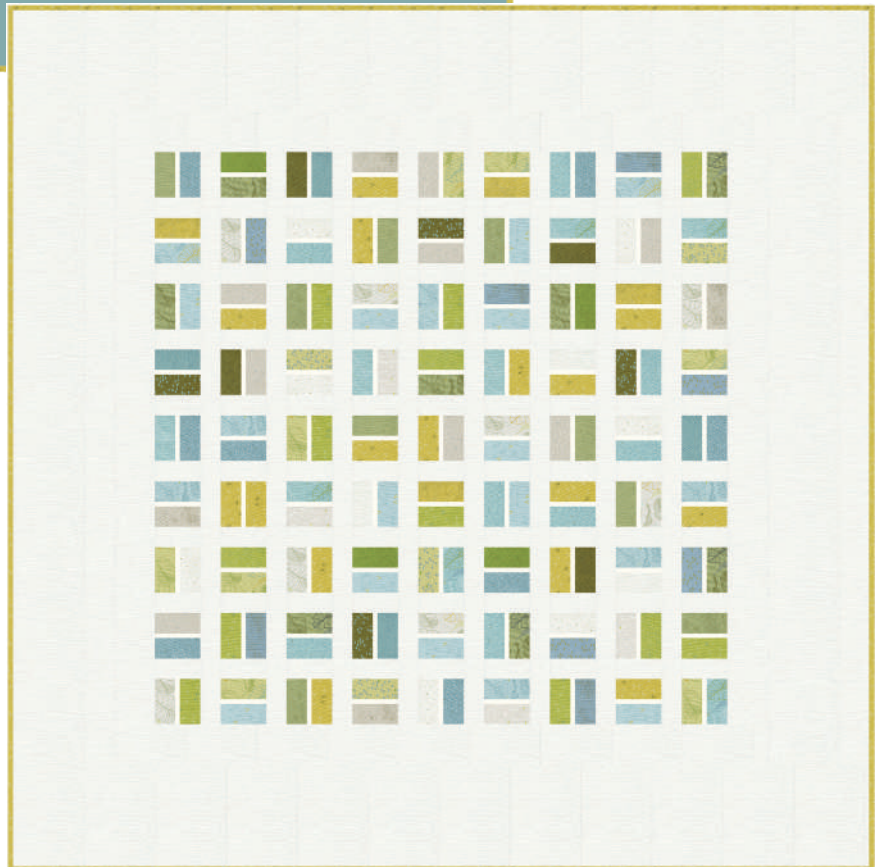


**ZC ECQP Eclipse** 73" x 73" LC Friendly  
by Zen Chic

# ZEN CHIC



**ZC FRQP Fragment**  
71" x 71" by Zen Chic



**ZC PCQP Play a Card 85" x 85" PP Friendly**  
by Zen Chic