





# Wildflowers

*moda*

**A** field bursting with wildflowers is nature's belly laugh — an irrepressible explosion of joy. Capture that feeling with Moda's newest Wildflowers collection, which celebrates these gifts of color and texture that brighten our spring and summer days. From a full field of flowers to delicate, tossed posies, the prints in Wildflowers 2024 are rendered in bright, bold colors like royal blue, scarlet, saffron, and shamrock, for projects that will bring the beauty of these blooms into your home!



DECEMBER DELIVERY

*moda*



# Wildflowers *moda*



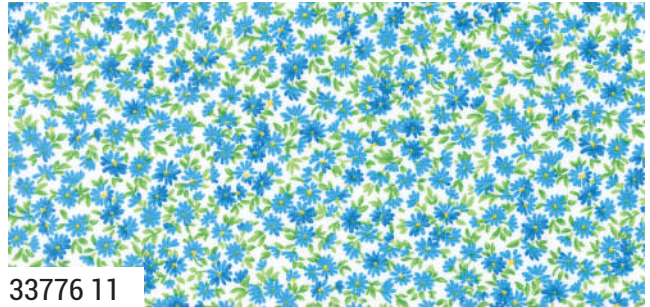
33771 11



33772 11



33774 11



33776 11



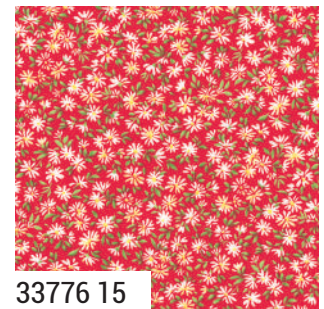
33775 11



33774 16



33775 15



33776 15

9900 200 OFF WHITE

9900 123 BETTY'S RED

Bella Solid Coordinates

*moda* **DECEMBER DELIVERY**



# Wildflowers *moda*



33770 11



33773 11



33773 12



33773 14



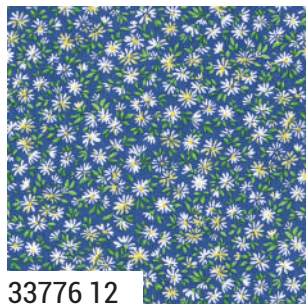
33774 13



33772 12



33771 13



33776 12



33775 12

33770

Asst. 15

Asst. 10

AB

JR

LC

MC

PP

DECEMBER DELIVERY

•17 Prints •100% Premium Cotton  
 AB includes all 17 skus. JRs, LCs, MCs & PPs include three each of 33770, 33771 & 33773 and two each of 33772 & 33774 - 33776. Bella Solid Coordinates are not included in assortments or precuts.

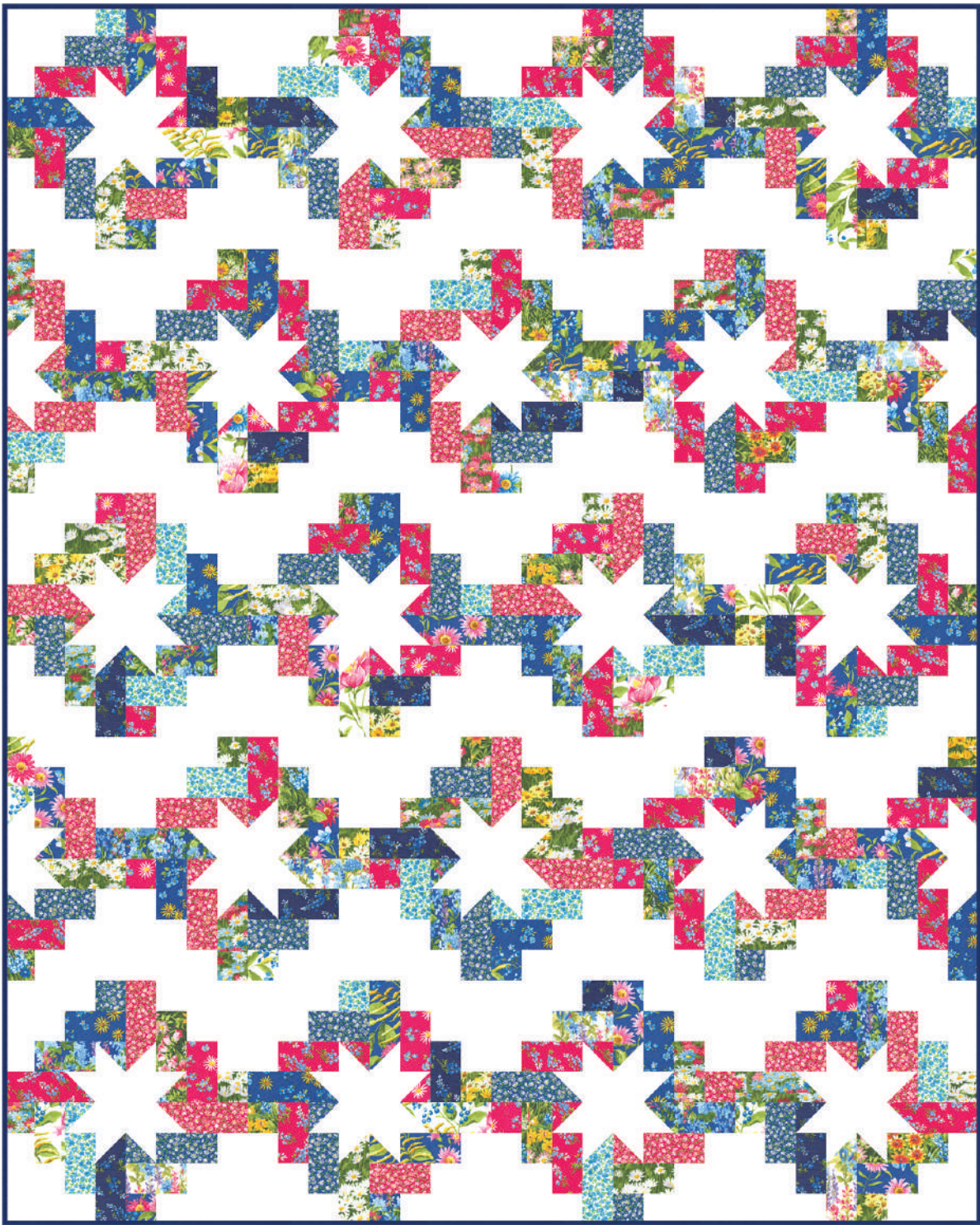
9900 232 SAFFRON

9900 345 SHAMROCK

9900 19 ROYAL

Bella Solid Coordinates

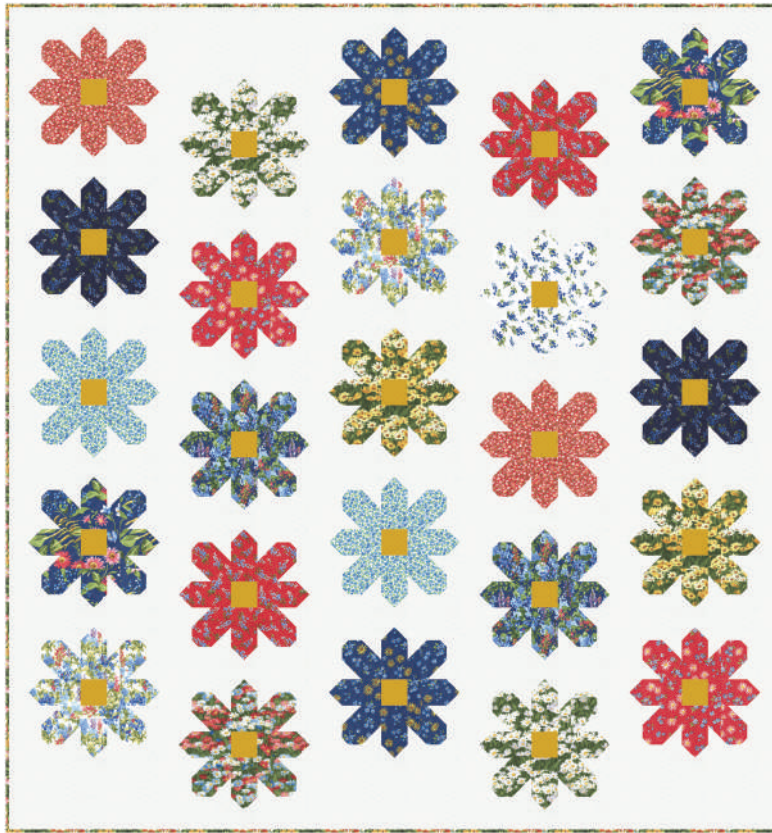




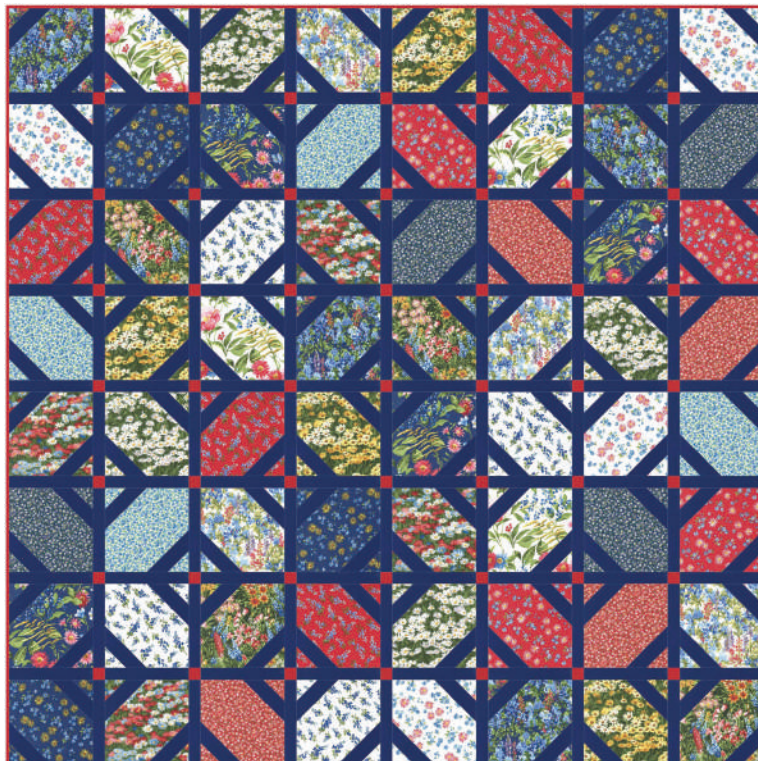
**MM 009** Homespun 64" x 64" AB Friendly  
by Modernly Morgan



# Wildflowers *moda*



PPP 18 Fresh As A Daisy 59" x 63"  
by Pen and Paper Patterns



WS 12 Fanciful Floor 63" x 63"  
by Wendy Sheppard